

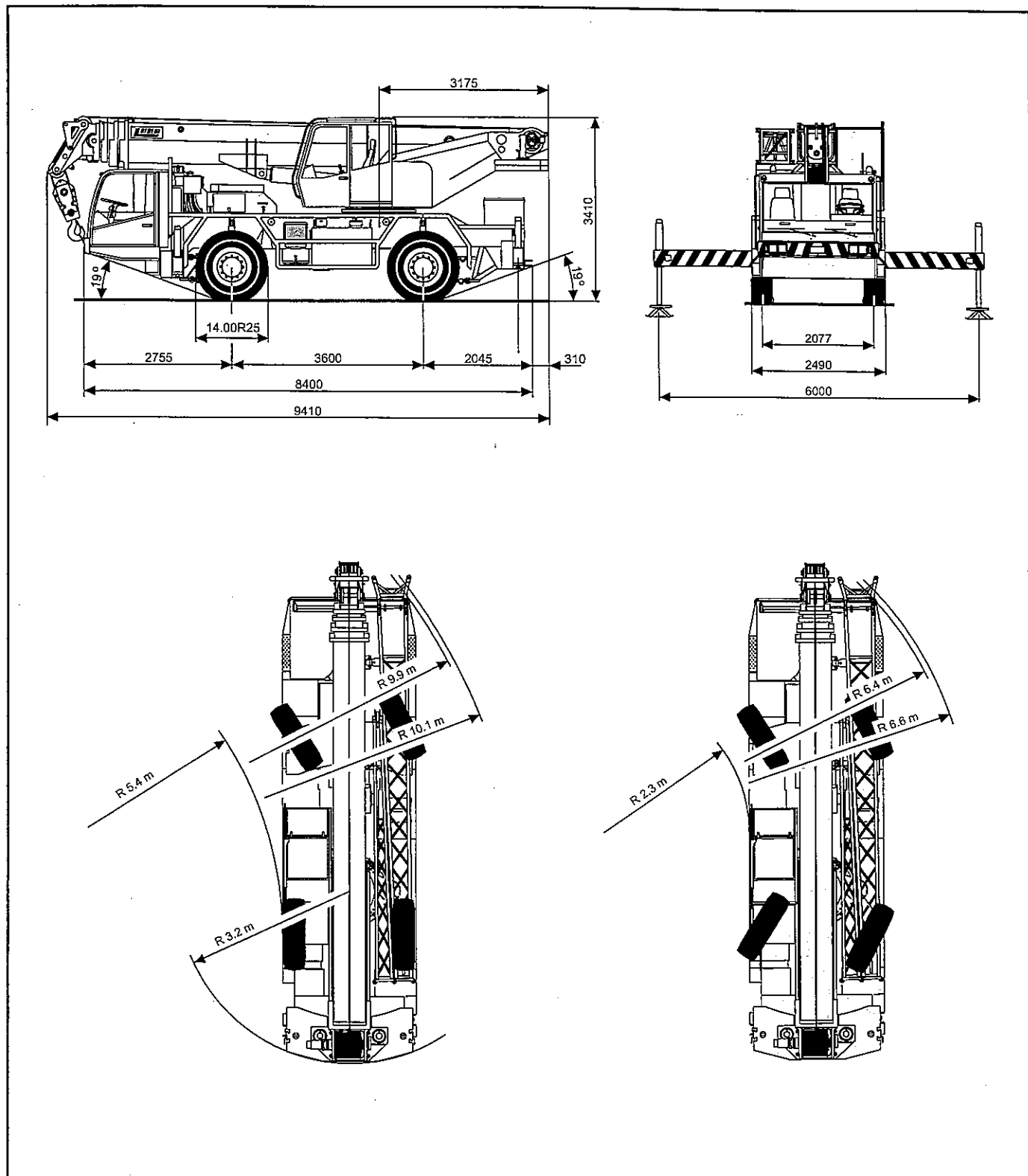
# DIMENSIONES

## DIMENSIONS / DIMENSIONS / ABMESSUNGEN

AT353200401

N1362

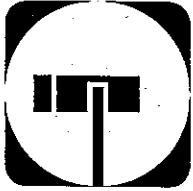
**AT-35/32C**



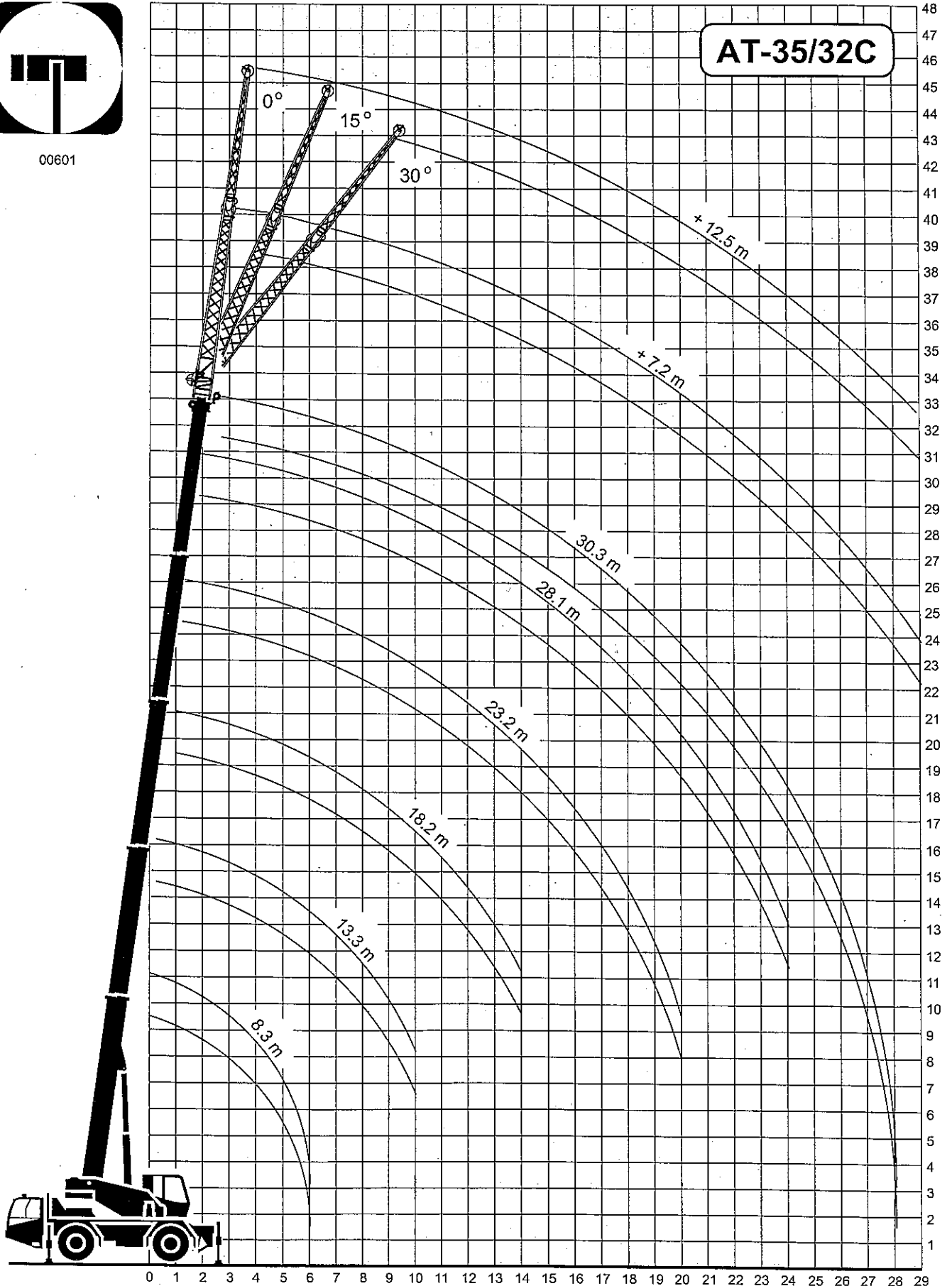
# DIAGRAMA DE ALCANCES

AT353200401

RANGE DIAGRAM / DIAGRAMME DES PORTÉES / AUSLADUNGSDIAGRAMM



00601



# TABLA DE CARGAS

AT353200401

02011-02021

**AT-35/32C**

## LIFTING CAPACITIES / FORCES DE LEVAGE / TRAGLASTEN

**CONTRAPESO / COUNTERWEIGHT / CONTREPOIDS / BALLAST**

1.0 t

PLUMA PRINCIPAL. GRÚA SOBRE ESTABILIZADORES TOTALMENTE EXTENDIDOS. ZONA DE TRABAJO 360°

MAIN BOOM. CRANE ON FULLY EXTENDED OUTRIGGERS. ROTATION 360°

FLÈCHE PRINCIPALE. GRUE SUR STABILISATEURS EN EXTENSION TOTALE. ROTATION 360°

TELESKOPUSLEGER. ARBEITSZUSTAND: ABGESTÜTZT (VOLLE STÜTZBASIS). ARBEITSBEREICH: 360°

RADIO RADIUS PORTÉE AUSLADUNG m	75%								RADIO RADIUS PORTÉE AUSLADUNG m	
	LONGITUD DE PLUMA BOOM LENGTH LONGUEUR DE FLÈCHE TELESKOPUSLEGERLÄNGEN									
	8.3 m	13.3 m		18.2 m		23.2m		28.1 m		30.3 m
3	35.0* / 30.0	23.0	19.0							3
4	25.4* / 23.5	21.3	19.6	17.3	16.3	13.5	12.8			4
5	18.0	17.5	17.0	16.8	15.8	13.2	12.5	9.1	8.2	5
6	11.2	12.0	13.3	12.8	12.5	12.0	11.8	9.1	8.2	6
7		8.6	10.3	10.1	10.0	10.0	9.8	9.0	8.0	7
8		6.5	8.0	7.5	8.1	8.1	8.0	7.7	7.4	8
9		5.1	6.3	5.9	6.7	6.5	6.6	6.3	6.3	9
10		4.0	5.2	4.7	5.6	5.2	5.7	5.3	5.3	10
12				3.1	4.0	3.5	4.2	3.8	3.8	12
14				2.0	2.9	2.4	3.1	2.7	2.7	14
16						1.7	2.2	1.9	1.9	16
18						1.1	1.7	1.3	1.3	18
20						0.7	1.3	0.9	0.9	20
22								0.6	0.6	22

RADIO RADIUS PORTÉE AUSLADUNG m	85%								RADIO RADIUS PORTÉE AUSLADUNG m	
	LONGITUD DE PLUMA BOOM LENGTH LONGUEUR DE FLÈCHE TELESKOPUSLEGERLÄNGEN									
	8.3 m	13.3 m		18.2 m		23.2m		28.1 m		30.3 m
3	35.0* / 30.0	23.0	19.0							3
4	25.4* / 23.5	21.3	19.6	17.3	16.3	13.5	12.8			4
5	19.8	19.3	18.7	16.8	15.8	13.2	12.8	9.1	8.2	5
6	12.3	13.2	14.6	14.1	13.8	13.2	12.8	9.1	8.2	6
7		9.5	11.3	11.1	11.0	11.0	10.8	9.1	8.2	7
8		7.2	8.8	8.3	8.9	8.9	8.8	8.5	8.1	8
9		5.6	6.9	6.5	7.4	7.2	7.3	6.9	6.9	9
10		4.4	5.7	5.2	6.2	5.7	6.3	5.8	5.8	10
12				3.4	4.4	3.9	4.6	4.2	4.2	12
14				2.2	3.2	2.6	3.4	3.0	3.0	14
16						1.9	2.4	2.1	2.1	16
18						1.2	1.9	1.4	1.4	18
20						0.8	1.4	1.0	1.0	20
22								0.7	0.7	22

I	0	90	0	90	0	90	0	90	100	I
II-III-IV	0	0	30	30	60	60	90	90	100	II-III-IV

# TABLA DE CARGAS

AT-353200401

02312-02322

**AT-35/32C**

## LIFTING CAPACITIES / FORCES DE LEVAGE / TRAGLASTEN

4.5 t

### CONTRAPESO / COUNTERWEIGHT / CONTREPOIDS / BALLAST

PLUMA PRINCIPAL. GRÚA SOBRE ESTABILIZADORES TOTALMENTE EXTENDIDOS. ZONA DE TRABAJO 360°

MAIN BOOM. CRANE ON FULLY EXTENDED OUTRIGGERS. ROTATION 360°

FLÈCHE PRINCIPALE. GRUE SUR STABILISATEURS EN EXTENSION TOTALE. ROTATION 360°

TELESKOP AUSLEGER. ARBEITSZUSTAND: ABGESTÜTZT (VOLLE STÜTZBASIS). ARBEITSBEREICH: 360°

RADIO RADIUS PORTÉE AUSLADUNG m	75%								RADIO RADIUS PORTÉE AUSLADUNG m	
	LONGITUD DE PLUMA BOOM LENGTH LONGUEUR DE FLÈCHE TELESKOP AUSLEGERLÄNGEN									
	8.3 m	13.3 m		18.2 m		23.2 m		28.1 m		30.3 m
3	35.0*/30.0	23.0	19.0							3
4	25.4*/23.5	22.8	20.1	17.3	16.3	13.5	12.8			4
5	19.8	21.2	20.6	17.3	16.0	13.5	12.8	9.1	8.2	5
6	15.0	17.0	17.0	16.0	14.5	13.3	12.3	9.1	8.2	6
7		12.5	13.5	13.0	12.7	12.2	10.7	9.1	8.2	7
8		9.6	10.5	10.6	10.6	10.2	9.5	8.8	7.8	8
9		7.5	8.5	8.1	9.0	8.8	8.5	8.1	7.5	9
10		6.1	7.3	6.7	7.7	7.5	7.5	7.3	7.1	10
12				4.8	5.7	5.2	5.7	5.5	5.5	12
14				3.5	4.2	3.8	4.4	4.2	4.2	14
16						2.8	3.4	3.1	3.1	16
18						2.0	2.7	2.3	2.3	18
20						1.5	2.2	1.8	1.8	20
22								1.4	1.4	22
24								1.0	1.0	24
26									0.7	26
28									0.5	28

RADIO RADIUS PORTÉE AUSLADUNG m	85%								RADIO RADIUS PORTÉE AUSLADUNG m	
	LONGITUD DE PLUMA BOOM LENGTH LONGUEUR DE FLÈCHE TELESKOP AUSLEGERLÄNGEN									
	8.3 m	13.3 m		18.2 m		23.2 m		28.1 m		30.3 m
3	35.0*/30.0	23.0	19.0							3
4	25.4*/23.5	22.8	20.1	17.3	16.3	13.5	12.8			4
5	21	21.0	20.6	17.3	16.3	13.5	12.8	9.1	8.2	5
6	15.0	17.0	17.0	17.0	16.0	13.5	12.8	9.1	8.2	6
7		13.8	14.9	14.3	14.0	13.4	11.8	9.1	8.2	7
8		10.6	11.8	11.7	11.7	11.2	10.5	9.1	8.2	8
9		8.3	9.6	8.9	9.9	9.7	9.4	8.9	8.2	9
10		6.7	8.0	7.4	8.5	8.3	8.3	8.0	7.8	10
12				5.3	6.3	5.7	6.3	6.1	6.1	12
14				3.9	4.6	4.2	4.8	4.6	4.6	14
16						3.1	3.7	3.4	3.4	16
18						2.2	3.0	2.5	2.5	18
20						1.7	2.4	2.0	2.0	20
22								1.5	1.5	22
24								1.1	1.1	24
26									0.8	26
28									0.6	28
I	0	90	0	90	0	90	0	90	100	I
II-III-IV	0	0	30	30	60	60	90	90	100	II-III-IV

# TABLA DE CARGAS

AT353200401

05011-05021

**AT-35/32C**

## LIFTING CAPACITIES / FORCES DE LEVAGE / TRAGLASTEN

### CONTRAPESO / COUNTERWEIGHT / CONTREPOIDS / BALLAST

1.0 t

PLUMA PRINCIPAL+PLUMÍN DE CELOSÍA. GRÚA SOBRE ESTABILIZADORES. TOTALMENTE EXTENDIDOS. ZONA DE TRABAJO 360°

MAIN BOOM+LATTICE JIB. CRANE ON FULLY EXTENDED OUTRIGGERS. ROTATION 360°

FLÈCHE PRINCIPALE+FLÉCHETTE TREILLIS. GRUE SUR STABILISATEURS EN EXTENSION TOTALE. ROTATION 360°

TELESKOP AUSLEGER+GITTERSPITZE. ARBEITSZUSTAND: ABGESTÜTZT (VOLLE STÜTZBASIS). ARBEITSBEREICH: 360°

RADIO RADIUS PORTÉE AUSLADUNG m	75%																		RADIO RADIUS PORTÉE AUSLADUNG m
	LONGITUD DE PLUMA+PLUMÍN MAIN BOOM+JIB LENGTH LONGUEUR DE FLÈCHE+FLÉCHETTE TELESKOP AUSLEGER- UND SPITZENLÄNGEN																		
	24.8 m + 7.2 m			28.1 m + 7.2 m			30.3 m + 7.2 m			24.8 m + 12.5 m			28.1 m + 12.5 m			30.3 m + 12.5 m			
	0°	15°	30°	0°	15°	30°	0°	15°	30°	0°	15°	30°	0°	15°	30°	0°	15°	30°	
5	6.5																		5
6	6.2			5.5			5.1			3.1									6
7	5.9			5.3			5.0			3.0			2.9						7
8	5.6	4.4		5.1	3.8		4.9	3.8		2.9			2.8			2.7			8
9	5.3	4.2	3.0	5.0	3.7	2.9	4.6	3.7	2.9	2.7	2.2		2.6			2.5			9
10	4.9	4.0	3.0	4.7	3.6	2.9	4.2	3.5	2.9	2.6	2.1		2.5	2.0		2.4			10
12	3.8	3.5	2.9	3.7	3.2	2.7	3.4	3.0	2.7	2.4	2.0	1.4	2.3	1.9		2.3	1.8		12
14	2.7	2.7	2.6	2.7	2.6	2.4	2.6	2.5	2.5	2.1	1.8	1.4	2.1	1.7	1.4	2.1	1.6	1.4	14
16	2.1	2.1	2.2	2.1	2.1	2.1	2.1	2.1	2.1	1.8	1.6	1.3	1.8	1.5	1.3	1.8	1.5	1.3	16
18	1.7	1.7	1.8	1.7	1.7	1.8	1.7	1.7	1.8	1.6	1.5	1.2	1.6	1.4	1.2	1.6	1.4	1.2	18
20	1.3	1.4	1.5	1.3	1.4	1.5	1.3	1.4	1.5	1.4	1.3	1.1	1.4	1.3	1.1	1.4	1.3	1.1	20
22	1.0	1.1	1.2	1.0	1.1	1.2	1.0	1.1	1.2	1.1	1.1	1.0	1.1	1.1	1.0	1.1	1.1	1.0	22
24	0.7	0.8		0.7	0.8	0.9	0.7	0.8	0.9	0.8	0.9	0.9	0.8	0.8	0.9	0.8	0.8	0.9	24
26	0.5	0.6		0.5	0.6	0.7	0.5	0.6	0.7	0.6	0.7	0.8	0.6	0.7	0.8	0.6	0.7	0.8	26
28				0.5			0.5	0.6	0.5	0.6	0.7	0.5	0.6	0.7	0.5	0.6	0.7	0.5	28
30										0.5			0.5	0.6		0.5	0.6		30
32																		0.5	32

RADIO RADIUS PORTÉE AUSLADUNG m	85%																		RADIO RADIUS PORTÉE AUSLADUNG m
	LONGITUD DE PLUMA+PLUMÍN MAIN BOOM+JIB LENGTH LONGUEUR DE FLÈCHE+FLÉCHETTE TELESKOP AUSLEGER- UND SPITZENLÄNGEN																		
	24.8 m + 7.2 m			28.1 m + 7.2 m			30.03 m + 7.2 m			24.8 m + 12.5 m			28.1 m + 12.5 m			30.3 m + 12.5 m			
	0°	15°	30°	0°	15°	30°	0°	15°	30°	0°	15°	30°	0°	15°	30°	0°	15°	30°	
5	6.5																		5
6	6.5			5.5			5.1			3.1									6
7	6.5			5.5			5.1			3.1			2.9						7
8	6.2	4.4		5.5	3.8		5.1	3.8		3.1			2.9			2.7			8
9	5.8	4.4	3.0	5.5	3.8	2.9	5.1	3.8	2.9	3.0	2.2		2.9			2.7			9
10	5.4	4.4	3.0	5.2	3.8	2.9	4.6	3.8	2.9	2.9	2.2		2.8	2.0		2.6			10
12	4.2	3.9	3.0	4.1	3.5	2.9	3.7	3.3	2.9	2.6	2.2	1.4	2.5	2.0		2.5	1.8		12
14	3.0	3.0	2.9	3.0	2.9	2.6	2.9	2.8	2.8	2.3	2.0	1.4	2.3	1.9	1.4	2.3	1.8	1.4	14
16	2.3	2.3	2.4	2.3	2.3	2.3	2.3	2.3	2.3	2.0	1.8	1.4	2.0	1.7	1.4	2.0	1.7	1.4	16
18	1.9	1.9	2.0	1.9	1.9	2.0	1.9	1.9	2.0	1.8	1.7	1.3	1.8	1.5	1.3	1.8	1.5	1.3	18
20	1.4	1.5	1.7	1.4	1.5	1.7	1.4	1.5	1.7	1.5	1.4	1.2	1.5	1.4	1.2	1.5	1.4	1.2	20
22	1.1	1.2	1.3	1.1	1.2	1.3	1.1	1.2	1.3	1.2	1.2	1.1	1.2	1.2	1.1	1.2	1.2	1.1	22
24	0.8	0.9		0.8	0.9	1.0	0.8	0.9	1.0	0.9	1.0	1.0	0.9	0.9	1.0	0.9	0.9	1.0	24
26	0.6	0.7		0.6	0.7	0.8	0.6	0.7	0.8	0.7	0.8	0.9	0.7	0.8	0.9	0.7	0.8	0.9	26
28				0.6			0.6	0.7	0.6	0.7	0.8	0.6	0.7	0.8	0.6	0.7	0.8	0.6	28
30											0.6			0.6	0.7		0.6	0.7	30
32																		0.6	32

I	75	75	75	90	90	90	100	100	100	75	75	75	90	90	90	100	100	100	I
II-III-IV	75	75	75	90	90	90	100	100	100	75	75	75	90	90	90	100	100	100	II-III-IV

# TABLA DE CARGAS

AT353200401

05311-05321

**AT-35/32C**

## LIFTING CAPACITIES / FORCES DE LEVAGE / TRAGLASTEN

**CONTRAPESO / COUNTERWEIGHT / CONTREPOIDS / BALLAST**

**4.5 t**

PLUMA PRINCIPAL+PLUMÍN DE CELOSÍA. GRÚA SOBRE ESTABILIZADORES TOTALMENTE EXTENDIDOS. ZONA DE TRABAJO 360°

MAIN BOOM+LATTICE JIB. CRANE ON FULLY EXTENDED OUTRIGGERS. ROTATION 360°

FLÈCHE PRINCIPALE+FLÉCHETTE TREILLIS. GRUE SUR STABILISATEURS EN EXTENSION TOTALE. ROTATION 360°  
TELESKOPAUSSLEGER+GITTERSPIITZE. ARBEITSZUSTAND: ABGESTÜTZT (VOLLE STÜTZBASIS). ARBEITSBEREICH: 360°

RADIO RADIUS PORTÉE AUSLADUNG m	75%																		RADIO RADIUS PORTÉE AUSLADUNG m
	LONGITUD DE PLUMA+PLUMÍN MAIN BOOM+JIB LENGTH LONGUEUR DE FLÈCHE+FLÉCHETTE TELESKOPAUSSLEGER- UND SPITZENLÄNGEN																		
	24.5 m + 7.2 m			28.1 m + 7.2 m			30.3 m + 7.2 m			24.8 m + 12.5 m			28.1 m + 12.5 m			30.3 m + 12.5 m			
	0°	15°	30°	0°	15°	30°	0°	15°	30°	0°	15°	30°	0°	15°	30°	0°	15°	30°	
5	6.5																		5
6	6.2			5.5			5.1			3.1									6
7	5.9			5.3			5.0			3.0			2.9						7
8	5.6	4.4		5.1	3.8		4.9	3.8		2.9			2.8			2.7			8
9	5.3	4.2	3.0	5.0	3.7	2.9	4.7	3.7	2.9	2.8	2.2		2.7			2.6			9
10	5.0	4.0	3.0	4.8	3.6	2.9	4.6	3.6	2.9	2.7	2.1		2.6	2.0		2.5			10
12	4.6	3.7	2.9	4.5	3.5	2.8	4.3	3.5	2.8	2.5	2.0	1.6	2.4	1.9		2.3	1.8		12
14	4.2	3.4	2.9	4.1	3.3	2.8	3.9	3.3	2.8	2.3	1.9	1.6	2.2	1.8	1.4	2.1	1.7	1.4	14
16	3.6	3.1	2.8	3.5	3.0	2.8	3.4	3.0	2.7	2.1	1.8	1.5	2.1	1.7	1.4	2.0	1.6	1.4	16
18	2.9	2.6	2.6	2.8	2.6	2.5	2.7	2.5	2.4	1.9	1.7	1.5	1.9	1.6	1.3	1.8	1.5	1.3	18
20	2.2	2.1	2.3	2.1	2.2	2.2	2.0	2.1	2.1	1.8	1.6	1.4	1.7	1.5	1.3	1.6	1.4	1.3	20
22	1.7	1.7	1.9	1.6	1.7	1.8	1.5	1.6	1.7	1.6	1.5	1.4	1.5	1.4	1.2	1.4	1.3	1.2	22
24	1.3	1.4	1.5	1.3	1.4	1.5	1.2	1.3	1.4	1.5	1.4	1.3	1.4	1.3	1.2	1.3	1.2	1.2	24
26	1.0	1.1	1.2	1.0	1.1	1.2	0.9	1.0	1.1	1.2	1.3	1.3	1.2	1.2	1.1	1.1	1.1	1.1	26
28	0.8			0.8	0.9	1.0	0.7	0.8	0.9	1.0	1.1	1.1	1.0	1.1	1.1	0.9	1.0	1.0	28
30				0.6	0.7		0.5	0.6	0.7	0.8	0.9	0.9	0.8	0.9	0.9	0.7	0.8	0.8	30
32				0.5				0.5		0.6	0.7		0.6	0.7	0.7	0.5	0.6	0.6	32
34										0.5	0.6		0.5	0.6	0.6		0.5	0.5	34
36														0.5					36

RADIO RADIUS PORTÉE AUSLADUNG m	85%																		RADIO RADIUS PORTÉE AUSLADUNG m
	LONGITUD DE PLUMA+PLUMÍN MAIN BOOM+JIB LENGTH LONGUEUR DE FLÈCHE+FLÉCHETTE TELESKOPAUSSLEGER- UND SPITZENLÄNGEN																		
	24.5 m + 7.2 m			28.1 m + 7.2 m			30.3 m + 7.2 m			24.8 m + 12.5 m			28.1 m + 12.5 m			30.3 m + 12.5 m			
	0°	15°	30°	0°	15°	30°	0°	15°	30°	0°	15°	30°	0°	15°	30°	0°	15°	30°	
5	6.5																		5
6	6.5			5.5			5.1			3.1									6
7	6.5			5.5			5.1			3.1			2.9						7
8	6.2	4.4		5.5	3.8		5.1	3.8		3.1			2.9			2.7			8
9	5.8	4.4	3.0	5.5	3.8	2.9	5.1	3.8	2.9	3.1	2.2		2.9			2.7			9
10	5.5	4.4	3.0	5.3	3.8	2.9	5.1	3.8	2.9	3.0	2.2		2.9	2.0		2.7			10
12	5.1	4.1	3.0	5.0	3.8	2.9	4.7	3.8	2.9	2.7	2.2	1.6	2.6	2.0		2.5	1.8		12
14	4.6	3.7	3.0	4.5	3.6	2.9	4.3	3.6	2.9	2.5	2.1	1.6	2.4	2.0	1.4	2.3	1.8	1.4	14
16	4.0	3.4	3.0	3.9	3.3	2.9	3.7	3.3	2.9	2.3	2.0	1.6	2.3	1.9	1.4	2.2	1.8	1.4	16
18	3.2	3.0	2.9	3.1	2.9	2.8	3.0	2.8	2.6	2.1	1.9	1.6	2.1	1.8	1.4	2.0	1.7	1.4	18
20	2.4	2.5	2.5	2.3	2.4	2.4	2.2	2.3	2.3	2.0	1.8	1.5	1.9	1.7	1.4	1.8	1.5	1.4	20
22	1.9	2.0	2.1	1.8	1.9	2.0	1.7	1.8	1.9	1.8	1.7	1.5	1.7	1.5	1.3	1.5	1.4	1.3	22
24	1.4	1.5	1.7	1.4	1.5	1.7	1.3	1.4	1.5	1.7	1.5	1.4	1.5	1.4	1.3	1.4	1.3	1.3	24
26	1.1	1.2	1.3	1.1	1.2	1.3	1.0	1.1	1.2	1.3	1.4	1.4	1.3	1.3	1.2	1.2	1.2	1.2	26
28	0.9	1.0		0.9	1.0	1.1	0.8	0.9	1.0	1.1	1.2	1.2	1.1	1.2	1.2	1.0	1.1	1.1	28
30				0.7	0.8		0.6	0.7	0.8	0.9	1.0	1.0	0.9	1.0	1.0	0.8	0.9	0.9	30
32				0.6				0.6		0.7	0.8		0.7	0.8	0.8	0.6	0.7	0.7	32
34										0.6	0.7		0.6	0.7	0.7		0.6	0.6	34
36														0.6					36

I	75	75	75	90	90	90	100	100	100	75	75	75	90	90	90	100	100	100	I
II-III-IV	75	75	75	90	90	90	100	100	100	75	75	75	90	90	90	100	100	100	II-III-IV

# TABLA DE CARGAS

AT353200401

02510-02520

**AT-35/32C**

## LIFTING CAPACITIES / FORCES DE LEVAGE / TRAGLASTEN

### CONTRAPESO / COUNTERWEIGHT / CONTREPOIDS / BALLAST

1.0 t

PLUMA PRINCIPAL. GRÚA SOBRE ESTABILIZADORES EXTENDIDOS 6.4 m x 4.1 m. ZONA DE TRABAJO 360°

MAIN BOOM. CRANE ON 6.4 m x 4.1 m OUTFITTERS. ROTATION 360°

FLÈCHE PRINCIPALE. GRUE SUR STABILISATEURS EN EXTENSION 6.4 m x 4.1 m. ROTATION 360°

TELESKOP AUSLEGER. ARBEITSZUSTAND: ABGESTÜTZT (6.4 m x 4.1 m). ARBEITSBEREICH: 360°

RADIO RADIUS PORTÉE AUSLADUNG m	75%								RADIO RADIUS PORTÉE AUSLADUNG m	
	LONGITUD DE PLUMA BOOM LENGTH LONGUEUR DE FLÈCHE TELESKOP AUSLEGERLÄNGEN									
	8.3 m	13.3 m		18.2 m		23.2m		28.1 m		30.3 m
3	26.0	23.0	19.0							3
4	16.0	15.5	17.4	17.3	16.3	13.5	12.8			4
5	9.5	9.6	11.5	10.2	10.8	10.4	10.8	9.1	8.2	5
6	4.0	6.4	7.6	7.0	8.0	7.2	8.6	7.3	7.0	6
7		4.4	5.8	4.9	6.3	5.3	6.8	5.8	5.8	7
8		3.3	4.6	3.7	5.0	4.2	5.3	4.5	4.5	8
9		2.4	3.6	3.0	3.9	3.3	4.1	3.6	3.6	9
10		1.7	2.8	2.4	3.1	2.6	3.3	2.9	2.9	10
12				1.4	2.0	1.7	2.4	1.9	1.9	12
14				0.7	1.3	1.0	1.7	1.2	1.2	14
16						0.6	1.1	0.7	0.7	16
18							0.7	0.5	0.5	18
20							0.5			20

RADIO RADIUS PORTÉE AUSLADUNG m	85%								RADIO RADIUS PORTÉE AUSLADUNG m	
	LONGITUD DE PLUMA BOOM LENGTH LONGUEUR DE FLÈCHE TELESKOP AUSLEGERLÄNGEN									
	8.3 m	13.3 m		18.2 m		23.2m		28.1 m		30.3 m
3	28.6	23.0	19.0							3
4	17.6	17.1	19.1	17.3	16.3	13.5	12.8			4
5	10.5	10.5	12.7	11.2	11.9	11.4	11.9	9.1	8.2	5
6	4.4	7.0	8.4	7.7	8.8	7.9	9.5	8.0	7.7	6
7		4.8	6.4	5.4	6.9	5.8	7.5	6.4	6.4	7
8		3.6	5.1	4.1	5.5	4.6	5.8	5.0	5.0	8
9		2.6	4.0	3.3	4.3	3.6	4.5	4.0	4.0	9
10		1.8	3.1	2.6	3.4	2.9	3.6	3.2	3.2	10
12				1.5	2.2	1.9	2.6	2.1	2.1	12
14				0.8	1.4	1.1	1.9	1.3	1.3	14
16						0.7	1.2	0.8	0.8	16
18							0.8	0.6	0.6	18
20							0.6			20

I	0	90	0	90	0	90	0	90	100	I
II-III-IV	0	0	30	30	60	60	90	90	100	II-III-IV

# TABLA DE CARGAS

AT353200401

02710-02720

**AT-35/32C**

## LIFTING CAPACITIES / FORCES DE LEVAGE / TRAGLASTEN

### CONTRAPESO / COUNTERWEIGHT / CONTREPOIDS / BALLAST

4.5 t

PLUMA PRINCIPAL. GRÚA SOBRE ESTABILIZADORES EXTENDIDOS 6.4 m x 4.1 m. ZONA DE TRABAJO 360°

MAIN BOOM. CRANE ON 6.4 m x 4.1 m OUTRIGGERS. ROTATION 360°

FLÈCHE PRINCIPALE. GRUE SUR STABILISATEURS EN EXTENSION 6.4 m x 4.1 m. ROTATION 360°

TELESKOPAUSSLEGER. ARBEITSZUSTAND: ABGESTÜTZT (6.4 m x 4.1 m). ARBEITSBEREICH: 360°

RADIO RADIUS PORTÉE AUSLADUNG m	75%								RADIO RADIUS PORTÉE AUSLADUNG m	
	LONGITUD DE PLUMA BOOM LENGTH LONGUEUR DE FLÈCHE TELESKOPAUSSLEGERLÄNGEN									
	8.3 m	13.3 m		18.2 m		23.2m		28.1 m		30.3 m
3	28.0	23.0	19.0							3
4	21.0	21.8	19.8	17.3	16.3	13.5	12.8			4
5	13.5	14.2	15.8	14.8	15.8	13.3	12.8	9.1	8.2	5
6	8.0	9.4	10.6	10.3	11.5	10.1	10.9	9.1	8.2	6
7		6.8	8.0	7.7	8.5	8.0	8.9	8.5	8.2	7
8		5.2	6.5	6.0	6.8	6.5	7.1	6.8	6.8	8
9		4.0	5.4	4.7	5.6	5.2	5.7	5.5	5.5	9
10		3.0	4.5	3.8	4.7	4.2	4.8	4.4	4.4	10
12				2.5	3.4	2.9	3.4	3.0	3.0	12
14				1.7	2.6	2.0	2.5	2.1	2.1	14
16						1.4	1.9	1.5	1.5	16
18						0.9	1.4	1.0	1.0	18
20						0.6	1.0	0.7	0.7	20
22								0.5	0.5	22

RADIO RADIUS PORTÉE AUSLADUNG m	85%								RADIO RADIUS PORTÉE AUSLADUNG m	
	LONGITUD DE PLUMA BOOM LENGTH LONGUEUR DE FLÈCHE TELESKOPAUSSLEGERLÄNGEN									
	8.3 m	13.3 m		18.2 m		23.2m		28.1 m		30.3 m
3	30.0	23.0	19.0							3
4	23.1	22.8	20.1	17.3	16.3	13.5	12.8			4
5	14.9	15.6	17.4	16.3	16.3	13.5	12.8	9.1	8.2	5
6	8.8	10.3	11.7	11.3	12.7	11.1	12.0	9.1	8.2	6
7		7.5	8.8	8.5	9.4	8.8	9.8	9.1	8.2	7
8		5.7	7.2	6.6	7.5	7.2	7.8	7.5	7.5	8
9		4.4	5.9	5.2	6.2	5.7	6.3	6.1	6.1	9
10		3.3	5.0	4.2	5.2	4.6	5.3	4.8	4.8	10
12				2.8	3.7	3.2	3.7	3.3	3.3	12
14				1.9	2.9	2.2	2.8	2.3	2.3	14
16						1.5	2.1	1.7	1.7	16
18						1.0	1.5	1.1	1.1	18
20						0.7	1.1	0.8	0.8	20
22								0.6	0.6	22

I	0	90	0	90	0	90	0	90	100	I
II-III-IV	0	0	30	30	60	60	90	90	100	II-III-IV