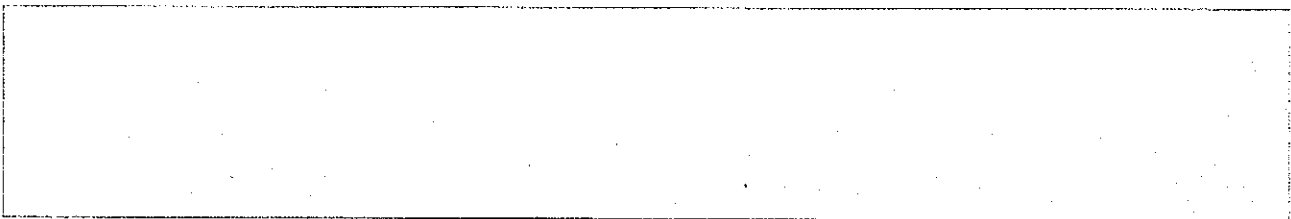
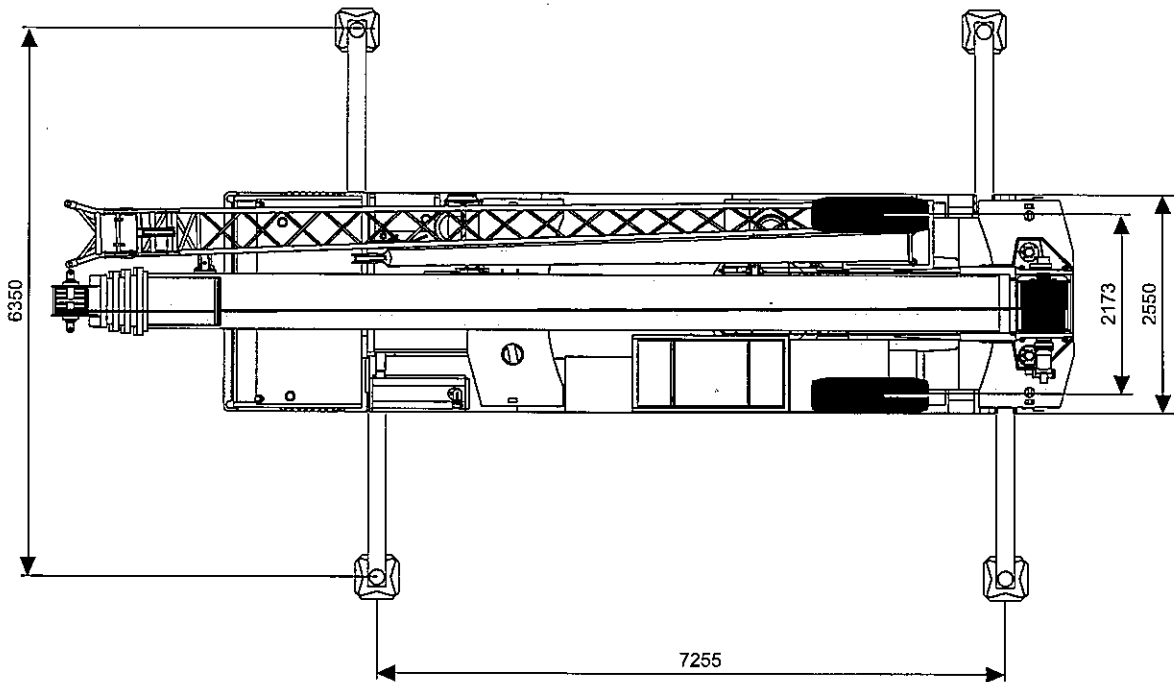
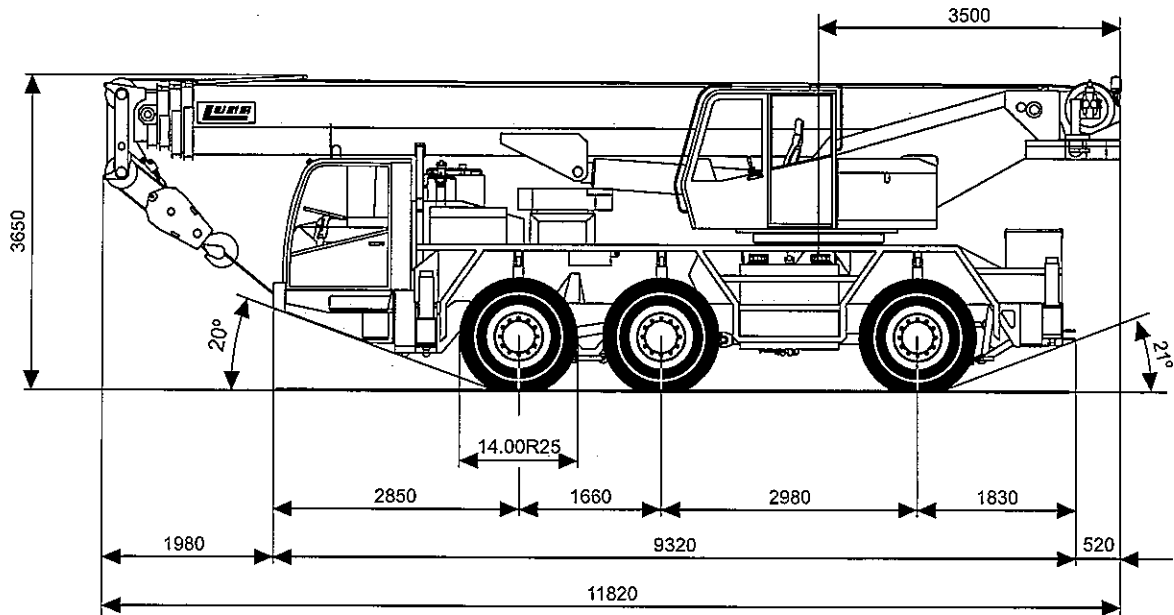


# DIMENSIONES

DIMENSIONS / DIMENSIONS / ABMESSUNGEN

AT604200400

N1490

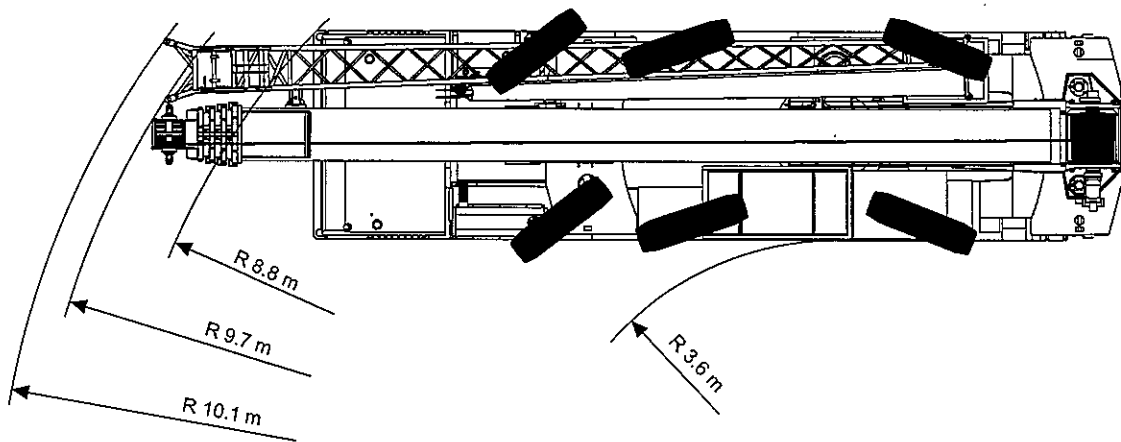
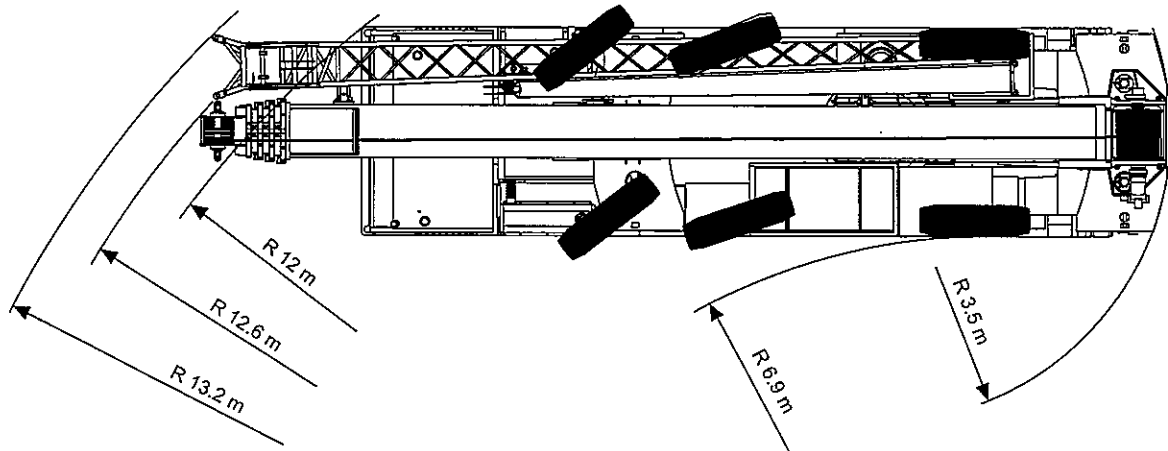


# DIMENSIONES

DIMENSIONS / DIMENSIONS / ABMESSUNGEN

AT604200400

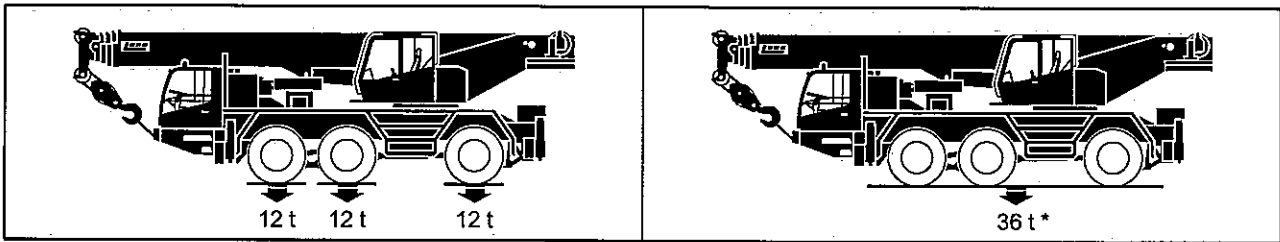
N1499



# PESOS

## WEIGHTS / POIDS / GEWICHTE

AT604200400




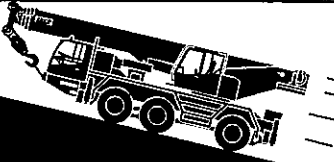


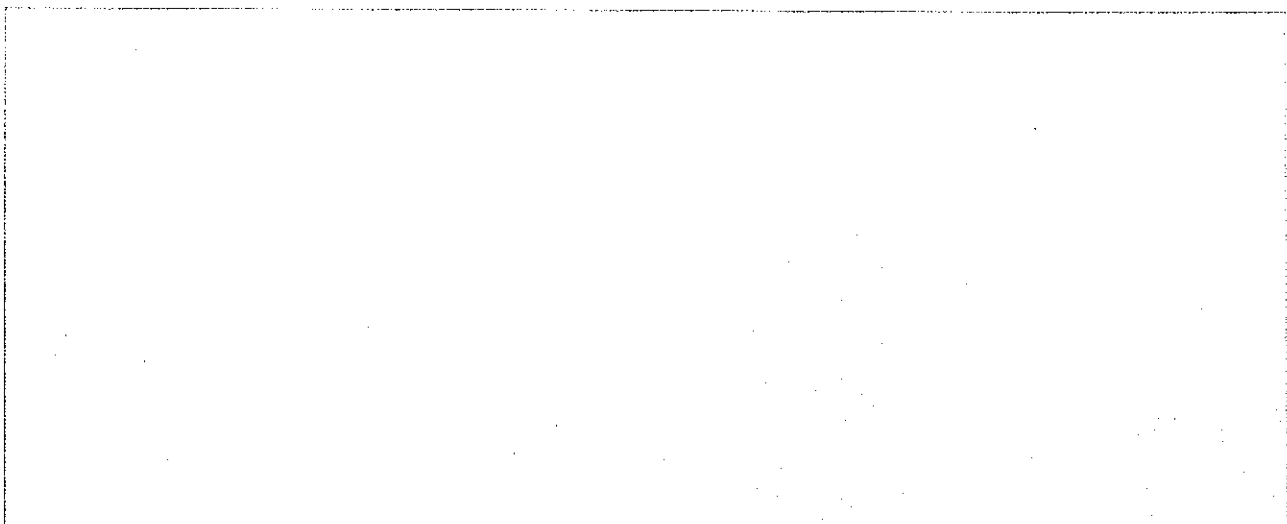
\* Con depósitos llenos, contrapeso de 3.4 t y gancho de 50 t.

With filled tanks, 3.4 t counterweight and 50 t hook. / Avec des réservoirs pleins, contrepoids de 3.4 t et crochet de 50 t / Mit vollem Tank, 3.4 t Gegengewicht und 50 Hakenflasche.

# VELOCIDAD DE TRASLADO

## TRAVEL SPEED / VITESSE DE DEPLACEMENT / FAHRGESCHWINDIGKEITEN

	1	2	3	4	5	6	R1
 Km/h	10.8	24	32	45.8	62.1	75	11
 Km/h	6.7	14.8	19.7	28.2	38.3	50.4	7
	60%						



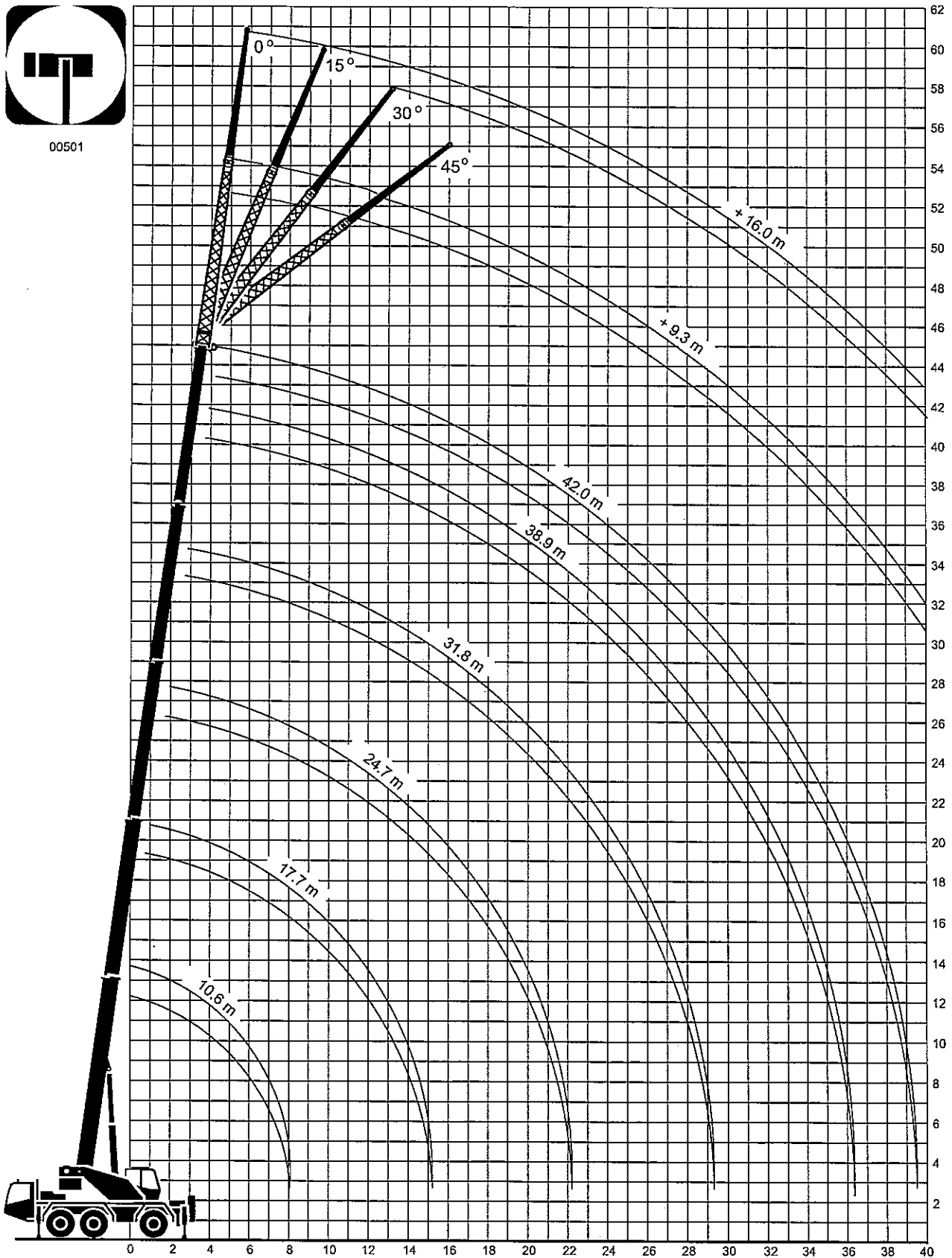
# DIAGRAMA DE ALCANCES

AT604200400

RANGE DIAGRAM / DIAGRAMME DES PORTÉES / AUSLADUNGSDIAGRAMM



00501



# TABLA DE CARGAS

AT604200400

## LIFTING CAPACITIES / FORCES DE LEVAGE / TRAGLASTEN

01312-01320

### CONTRAPESO / COUNTERWEIGHT / CONTREPOIDS / BALLAST

9.4 t

PLUMA PRINCIPAL, GRÚA SOBRE ESTABILIZADORES TOTALMENTE EXTENDIDOS. ZONA DE TRABAJO 360°

MAIN BOOM, CRANE ON FULLY EXTENDED OUTRIGGERS. ROTATION 360°

FLÈCHE PRINCIPALE, GRUE SUR STABILISATEURS EN EXTENSION TOTALE. ROTATION 360°

TELESKOPPAUSLEGER, ARBEITSZUSTAND: ABGESTÜTZT (VOLLE STÜTZBASIS), ARBEITSBEREICH: 360°

RADIO RADIUS PORTÉE AUSLADUNG m	75%									RADIO RADIUS PORTÉE AUSLADUNG m
	LONGITUD DE PLUMA BOOM LENGTH LONGUEUR DE FLÈCHE TELESKOPPAUSLEGERLÄNGEN									
	10.6 m	17.7 m		24.7 m		31.8 m		38.9 m	42.0 m	
2.5	60.0*									2.5
3	50.0	34.0	21.3							3
4	42.0	34.0	21.3	21.0	18.5					4
5	34.0	31.8	21.3	21.0	18.2	15.5	13.0			5
6	28.2	26.5	21.2	20.9	16.7	15.3	13.0	10.0		6
7	23.4	22.0	20.9	20.6	15.1	15.0	12.7	10.0	8.7	7
8	19.0	18.0	19.8	17.9	13.7	14.6	12.0	10.0	8.7	8
9		15.0	17.1	15.5	12.5	13.9	11.0	9.9	8.5	9
10		12.4	14.5	13.2	11.5	13.0	10.2	9.9	8.2	10
12		8.8	10.8	9.8	9.8	10.5	8.7	9.7	7.7	12
14		6.5	8.0	7.4	8.4	8.0	7.5	8.4	7.2	14
16				5.8	7.1	6.3	6.5	6.7	6.7	16
18				4.6	5.8	5.0	5.7	5.4	5.4	18
20				3.6	4.7	4.0	4.9	4.4	4.4	20
22				2.8	3.9	3.3	4.2	3.7	3.7	22
24						2.7	3.6	3.1	3.1	24
26						2.1	3.1	2.5	2.5	26
28						1.7	2.6	2.1	2.1	28
30								1.7	1.7	30
32								1.4	1.4	32
34								1.1	1.1	34
36								0.8	0.8	36
38									0.6	38

RADIO RADIUS PORTÉE AUSLADUNG m	85%									RADIO RADIUS PORTÉE AUSLADUNG m
	LONGITUD DE PLUMA BOOM LENGTH LONGUEUR DE FLÈCHE TELESKOPPAUSLEGERLÄNGEN									
	10.6 m	17.7 m		24.7 m		31.8 m		38.9 m	42.0 m	
2.5	60.0*									2.5
3	50.0	34.0	21.3							3
4	42.0	34.0	21.3	21.0	18.5					4
5	34.0	31.8	21.3	21.0	18.2	15.5	13.0			5
6	28.2	27.0	21.2	20.9	17.6	15.3	13.0	10.0		6
7	23.4	22.5	21.0	20.6	16.6	15.0	12.7	10.0	8.7	7
8	20.9	19.5	20.3	19.7	15.1	14.8	12.4	10.0	8.7	8
9		16.5	18.8	17.1	13.8	14.4	12.0	9.9	8.5	9
10		13.6	16.0	14.5	12.7	14.0	11.2	9.9	8.2	10
12		9.7	11.9	10.8	10.8	11.6	9.6	9.7	7.7	12
14		7.2	8.8	8.1	9.2	8.8	8.3	9.2	7.2	14
16				6.4	7.8	6.9	7.2	7.4	6.8	16
18				5.1	6.4	5.5	6.3	5.9	5.9	18
20				4.0	5.2	4.4	5.4	4.8	4.8	20
22				3.1	4.3	3.6	4.6	4.1	4.1	22
24						3.0	4.0	3.4	3.4	24
26						2.3	3.4	2.8	2.8	26
28						1.9	2.9	2.3	2.3	28
30								1.9	1.9	30
32								1.5	1.5	32
34								1.2	1.2	34
36								0.9	0.9	36
38									0.7	38

I	0	90	0	90	0	90	0	90	100	I
II-III-IV	0	0	30	30	60	60	90	90	100	II-III-IV

# TABLA DE CARGAS

AT604200400

## LIFTING CAPACITIES / FORCES DE LEVAGE / TRAGLASTEN

01012-01020

### CONTRAPESO / COUNTERWEIGHT / CONTREPOIDS / BALLAST

3.4 t

PLUMA PRINCIPAL. GRÚA SOBRE ESTABILIZADORES TOTALMENTE EXTENDIDOS. ZONA DE TRABAJO 360°

MAIN BOOM. CRANE ON FULLY EXTENDED OUTRIGGERS. ROTATION 360°

FLÈCHE PRINCIPALE. GRUE SUR STABILISATEURS EN EXTENSION TOTALE. ROTATION 360°

TELESKOP AUSLEGER. ARBEITSZUSTAND: ABGESTÜTZT (VOLLE STÜTZBASIS). ARBEITSBEREICH: 360°

RADIO RADIUS PORTÉE AUSLADUNG m	75%								RADIO RADIUS PORTÉE AUSLADUNG m	
	LONGITUD DE PLUMA BOOM LENGTH LONGUEUR DE FLÈCHE TELESKOP AUSLEGERLÄNGEN									
	10.6 m	17.7 m		24.7 m		31.8 m		38.9 m		42.0 m
2.5	55.0*									2.5
3	47.0	34.0	21.3							3
4	39.0	34.0	21.3	21.0	18.5					4
5	31.0	31.0	21.2	21.0	18.2	15.5	13.0			5
6	23.7	23.8	20.9	20.5	16.7	15.3	13.0	10.0		6
7	17.5	18.0	19.5	17.9	15.1	15.0	12.7	10.0	8.7	7
8	13.3	13.9	16.1	15.0	13.5	14.4	12.0	10.0	8.7	8
9		11.0	13.0	11.8	12.2	12.8	11.0	9.9	8.5	9
10		8.8	10.5	9.4	10.7	10.6	10.2	9.9	8.2	10
12		5.8	7.5	6.6	8.0	7.6	8.3	8.0	7.5	12
14		3.9	5.5	4.9	6.0	5.6	6.6	5.9	5.9	14
16				3.6	4.8	4.1	5.2	4.5	4.5	16
18				2.6	3.8	3.1	4.1	3.5	3.5	18
20				1.8	3.0	2.4	3.3	2.7	2.7	20
22				1.2	2.4	1.8	2.7	2.1	2.1	22
24						1.3	2.1	1.6	1.6	24
26						0.9	1.6	1.2	1.2	26
28						0.6	1.3	0.9	0.9	28
30								0.6	0.6	30

RADIO RADIUS PORTÉE AUSLADUNG m	85%								RADIO RADIUS PORTÉE AUSLADUNG m	
	LONGITUD DE PLUMA BOOM LENGTH LONGUEUR DE FLÈCHE TELESKOP AUSLEGERLÄNGEN									
	10.6 m	17.7 m		24.7 m		31.8 m		38.9 m		42.0 m
2.5	55.0*									2.5
3	47.0	34.0	21.3							3
4	39.0	34.0	21.3	21.0	18.5					4
5	31.0	31.8	21.3	21.0	18.2	15.5	13.0			5
6	16.0	26.2	21.2	20.9	17.6	15.3	13.0	10.0		6
7	19.3	19.8	21.0	19.7	16.6	15.0	12.7	10.0	8.7	7
8	14.6	15.3	17.7	16.5	14.9	14.8	12.4	10.0	8.7	8
9		12.1	14.3	13.0	13.4	14.1	12.0	9.9	8.5	9
10		9.7	11.6	10.3	11.8	11.7	11.2	9.9	8.2	10
12		6.4	8.3	7.3	8.8	8.4	9.1	8.8	7.7	12
14		4.3	6.1	5.4	6.6	6.2	7.3	6.5	6.5	14
16				4.0	5.3	4.5	5.7	5.0	5.0	16
18				2.9	4.2	3.4	4.5	3.9	3.9	18
20				2.0	3.3	2.6	3.6	3.0	3.0	20
22				1.3	2.6	2.0	3.0	2.3	2.3	22
24						1.4	2.3	1.8	1.8	24
26						1.0	1.8	1.3	1.3	26
28						0.7	1.4	1.0	1.0	28
30								0.7	0.7	30

I	0	90	0	90	0	90	0	90	100	I
II-III-IV	0	0	30	30	60	60	90	90	100	II-III-IV

# TABLA DE CARGAS

AT604200400

## LIFTING CAPACITIES / FORCES DE LEVAGE / TRAGLASTEN

01511-01520

### CONTRAPESO / COUNTERWEIGHT / CONTREPOIDS / BALLAST

9.4 t

PLUMA PRINCIPAL. GRÚA SOBRE ESTABILIZADORES TOTALMENTE EXTENDIDOS 7.3 m x 4.3 m. ZONA DE TRABAJO 360°

MAIN BOOM. CRANE ON 7.3 m x 4.3 m OUTRIGGERS. ROTATION 360°

FLÈCHE PRINCIPALE. GRUE SUR STABILISATEURS À DEMI CALAGE (7.3 m x 4.3 m). ROTATION 360°

TELESKOPUSLEGER. ARBEITSZUSTAND: ABGESTÜTZT (7.3 m x 4.3 m). ARBEITSBEREICH: 360°

RADIO RADIUS PORTÉE AUSLADUNG m	75%								RADIO RADIUS PORTÉE AUSLADUNG m	
	LONGITUD DE PLUMA BOOM LENGTH LONGUEUR DE FLÈCHE TELESKOPUSLEGERLÄNGEN									
	10.6 m	17.7 m		24.7 m		31.8 m		38.9 m		42.0 m
2.5	60.0*									2.5
3	47.0	34.0	21.3							3
4	36.5	28.8	21.3	21.0	18.5					4
5	26.0	23.6	21.0	21.0	16.5	15.5	13.0			5
6	19.5	19.1	19.7	19.0	14.7	15.3	13.0	10.0		6
7	15.0	14.6	16.8	15.5	13.2	13.0	12.5	10.0	8.7	7
8	11.5	10.9	13.8	12.5	11.8	11.2	11.5	10.0	8.7	8
9		8.7	11.0	10.0	10.5	9.6	10.3	9.2	8.5	9
10		7.3	8.8	8.0	9.2	8.2	9.2	8.2	8.2	10
12		5.4	6.5	6.0	7.3	6.2	7.0	6.4	6.4	12
14		3.7	4.8	4.4	5.7	4.6	5.5	5.0	5.0	14
16				3.2	4.4	3.6	4.4	3.6	3.9	16
18				2.3	3.4	2.8	3.6	3.1	3.1	18
20				1.7	2.6	2.1	2.9	2.4	2.4	20
22				1.2	2.1	1.7	2.4	1.9	1.9	22
24						1.3	1.9	1.5	1.5	24
26						0.9	1.5	1.1	1.1	26
28						0.6	1.2	0.8	0.8	28
30								0.5	0.5	30

RADIO RADIUS PORTÉE AUSLADUNG m	85%								RADIO RADIUS PORTÉE AUSLADUNG m	
	LONGITUD DE PLUMA BOOM LENGTH LONGUEUR DE FLÈCHE TELESKOPUSLEGERLÄNGEN									
	10.6 m	17.7 m		24.7 m		31.8 m		38.9 m		42.0 m
2.5	60.0*									2.5
3	50.0	34.0	21.3							3
4	40.2	31.7	21.3	21.0	18.5					4
5	28.6	26.0	21.3	21.0	18.2	15.5	13.0			5
6	21.5	21.0	21.2	20.9	16.2	15.3	13.0	10.0		6
7	16.5	16.1	18.5	17.1	14.5	14.3	12.7	10.0	8.7	7
8	12.7	12.0	15.2	13.8	13.0	12.3	12.4	10.0	8.7	8
9		9.6	12.1	11.0	11.6	10.6	11.3	9.9	8.5	9
10		8.0	9.7	8.8	10.1	9.0	10.1	9.0	8.2	10
12		5.9	7.2	6.6	8.0	6.8	7.7	7.0	7.0	12
14		4.1	5.3	4.8	6.3	5.1	6.1	5.5	5.5	14
16				3.5	4.8	4.0	4.8	4.0	4.3	16
18				2.5	3.7	3.1	4.0	3.4	3.4	18
20				1.9	2.9	2.3	3.2	2.6	2.6	20
22				1.3	2.3	1.9	2.6	2.1	2.1	22
24						1.4	2.1	1.7	1.7	24
26						1.0	1.7	1.2	1.2	26
28						0.7	1.3	0.9	0.9	28
30								0.6	0.6	30

I	0	90	0	90	0	90	0	90	100	I
II-III-IV	0	0	30	30	60	60	90	90	100	II-III-IV

# TABLA DE CARGAS

AT604200400

## LIFTING CAPACITIES / FORCES DE LEVAGE / TRAGLASTEN

01211-01220

### CONTRAPESO / COUNTERWEIGHT / CONTREPOIDS / BALLAST

3.4 t

PLUMA PRINCIPAL. GRÚA SOBRE ESTABILIZADORES TOTALMENTE EXTENDIDOS 7.3 m x 4.3 m. ZONA DE TRABAJO 360°

MAIN BOOM. CRANE ON 7.3 m x 4.3 m OUTRIGGERS. ROTATION 360°

FLÈCHE PRINCIPALE. GRUE SUR STABILISATEURS À DEMI CALAGE (7.3 m x 4.3 m). ROTATION 360°

TELESKOPAUSSLEGER. ARBEITSZUSTAND: ABGESTÜTZT (7.3 m x 4.3 m). ARBEITSBEREICH: 360°

RADIO RADIUS PORTÉE AUSLADUNG m	75%									RADIO RADIUS PORTÉE AUSLADUNG m
	LONGITUD DE PLUMA BOOM LENGTH LONGUEUR DE FLÈCHE TELESKOPAUSSLEGERLÄNGEN									
	10.6 m	17.7 m		24.7 m		31.8 m		38.9 m	42.0 m	
2.5	55.0*									2.5
3	45.0	32.0	21.3							3
4	32.0	23.0	21.3	21.0	18.5					4
5	20.0	17.0	18.0	16.5	14.0	15.5	13.0			5
6	13.8	12.8	14.0	13.0	11.8	13.2	11.3	10.0		6
7	9.8	9.5	11.0	10.2	10.0	10.4	9.8	8.6	8.7	7
8	7.5	7.0	8.9	8.0	8.5	8.2	8.4	7.3	7.3	8
9		5.1	7.2	6.4	7.2	6.6	7.3	6.2	6.2	9
10		4.0	6.0	5.2	6.2	5.4	6.3	5.4	5.4	10
12		2.5	4.3	3.6	4.7	3.8	4.7	4.1	4.1	12
14		1.3	3.0	2.4	3.5	2.7	3.7	3.0	3.0	14
16				1.6	2.6	1.9	2.8	2.2	2.2	16
18				1.0	1.9	1.3	2.1	1.7	1.7	18
20				0.5	1.3	0.8	1.6	1.2	1.2	20
22					0.8	0.5	1.2	0.8	0.8	22
24							0.8	0.5	0.5	24
26							0.5			26

RADIO RADIUS PORTÉE AUSLADUNG m	85%									RADIO RADIUS PORTÉE AUSLADUNG m
	LONGITUD DE PLUMA BOOM LENGTH LONGUEUR DE FLÈCHE TELESKOPAUSSLEGERLÄNGEN									
	10.6 m	17.7 m		24.7 m		31.8 m		38.9 m	42.0 m	
2.5	55.0*									2.5
3	49.5	34.0	21.3							3
4	35.2	25.3	21.3	21.0	18.5					4
5	22.0	18.7	19.8	18.2	15.4	15.5	13.0			5
6	15.2	14.1	15.4	14.3	13.0	14.5	12.4	10.0		6
7	11.8	10.5	12.1	11.2	11.0	11.4	10.8	9.5	8.7	7
8	8.3	7.7	9.8	8.8	9.4	9.0	9.2	8.0	8.0	8
9		5.6	7.9	7.0	7.9	7.3	8.0	6.8	6.8	9
10		4.4	6.6	5.7	6.8	5.9	6.9	5.9	5.9	10
12		2.8	4.7	4.0	5.2	4.2	5.2	4.5	4.5	12
14		1.4	3.3	2.6	3.9	3.0	4.1	3.3	3.3	14
16				1.8	2.9	2.1	3.1	2.4	2.4	16
18				1.1	2.1	1.4	2.3	1.9	1.9	18
20				0.6	1.4	0.9	1.8	1.3	1.3	20
22					0.9	0.6	1.3	0.9	0.9	22
24							0.9	0.6	0.6	24
26							0.6			26

I	0	90	0	90	0	90	0	90	100	I
II-III-IV	0	0	30	30	60	60	90	90	100	II-III-IV



# TABLA DE CARGAS

AT604200400

## LIFTING CAPACITIES / FORCES DE LEVAGE / TRAGLASTEN

04312-04320

### CONTRAPESO / COUNTERWEIGHT / CONTREPOIDS / BALLAST

9.4 t

PLUMA PRINCIPAL+PLUMÍN DE CELOSÍA. GRÚA SOBRE ESTABILIZADORES TOTALMENTE EXTENDIDOS. ZONA DE TRABAJO 360°  
 MAIN BOOM+LATTICE JIB. CRANE ON FULLY EXTENDED OUTRIGGERS. ROTATION 360°  
 FLÈCHE PRINCIPALE+FLÈCHETTE TREILLIS. GRUE SUR STABILISATEURS EN EXTENSION TOTALE. ROTATION 360°  
 TELESKOPAUSSLEGER+GITTERSPITZE. ARBEITSZUSTAND: ABGESTÜTZT (VOLLE STÜTZBASIS). ARBEITSBEREICH: 360°

RADIO RADIUS PORTÉE AUSLADUNG m	75%																				RADIO RADIUS PORTÉE AUSLADUNG m									
	LONGITUD DE PLUMA+PLUMÍN MAIN BOOM+JIB LENGTH LONGUEUR DE FLÈCHE+FLÈCHETTE TELESKOPAUSSLEGER- UND SPITZENLÄNGEN																													
	35.7 m + 9.3 m				38.9 m + 9.3 m				42.0 m + 9.3 m				35.7 m + 16.0 m				38.9 m + 16.0 m					42.0 m + 16.0 m								
	0°	15°	30°	45°	0°	15°	30°	45°	0°	15°	30°	45°	0°	15°	30°	45°	0°	15°	30°	45°	0°	15°	30°	45°						
7	5.5																								7					
8	5.3				4.1											2.8									8					
9	5.1	4.5			4.1				3.1						2.7			2.1							9					
10	5.0	4.5	4.3		4.1	3.7			3.1	3.1					2.6			2.1					1.7		10					
12	4.7	4.3	4.1	3.2	4.0	3.6	3.4		3.1	3.1	2.9				2.4	2.2		2.1					1.7		12					
14	4.4	4.1	3.9	3.1	3.9	3.5	3.3	2.8	3.1	3.1	2.8	2.4			2.2	2.1	1.9				2.1	2.0		1.7	1.7	14				
16	4.2	3.9	3.6	3.0	3.8	3.3	3.1	2.7	3.0	3.0	2.7	2.3			2.1	2.0	1.8				2.0	1.9	1.6		1.7	1.7	1.6	16		
18	4.0	3.7	3.3	2.9	3.6	3.1	2.8	2.6	3.0	2.9	2.6	2.2			2.0	1.9	1.7	1.5			1.9	1.8	1.5	1.3	1.7	1.7	1.5	1.1	18	
20	3.8	3.5	3.1	2.8	3.4	2.9	2.6	2.4	2.9	2.7	2.4	2.1			1.9	1.8	1.6	1.4			1.8	1.7	1.4	1.2	1.7	1.7	1.4	1.1	20	
22	3.4	3.0	2.7	2.5	3.1	2.6	2.4	2.1	2.7	2.5	2.2	1.9			1.8	1.7	1.6	1.4			1.7	1.6	1.4	1.2	1.6	1.6	1.4	1.1	22	
24	3.0	2.7	2.5	2.2	2.8	2.4	2.2	1.8	2.4	2.3	2.0	1.6			1.7	1.6	1.4	1.3			1.6	1.5	1.3	1.2	1.5	1.5	1.3	1.1	24	
26	2.6	2.4	2.2	1.9	2.5	2.2	2.0	1.6	2.2	2.1	1.8	1.5			1.6	1.5	1.4	1.3			1.5	1.4	1.3	1.2	1.4	1.4	1.3	1.1	26	
28	2.2	2.1	1.9	1.6	2.1	2.0	1.8	1.5	2.0	1.9	1.7	1.4			1.5	1.4	1.3	1.2			1.4	1.3	1.2	1.1	1.3	1.3	1.2	1.0	28	
30	1.9	1.9	1.8	1.5	1.8	1.8	1.7	1.4	1.7	1.7	1.6	1.3			1.4	1.3	1.3	1.2			1.3	1.2	1.2	1.1	1.2	1.2	1.2	1.0	30	
32	1.6	1.7	1.7	1.4	1.5	1.6	1.6	1.3	1.4	1.5	1.5	1.2			1.3	1.3	1.2	1.2			1.2	1.1	1.1	1.1	1.1	1.1	1.1	1.0	32	
34	1.3	1.4	1.4	1.3	1.2	1.3	1.3	1.2	1.2	1.3	1.3	1.1			1.2	1.2	1.1	1.1			1.1	1.1	1.0	1.0	1.1	1.1	1.0	1.0	34	
36	1.0	1.1	1.1	1.1	0.9	1.0	1.0	1.0	0.9	1.0	1.0	1.0			1.1	1.1	1.1	1.1			1.0	1.0	1.0	1.0	1.0	1.0	1.0	1.0	36	
38	0.8	0.9	0.9	0.9	0.7	0.8	0.8	0.8	0.7	0.8	0.8	0.8			0.9	1.0	1.0	1.0			0.8	0.9	0.9	0.9	0.8	0.9	0.9	0.9	38	
40	0.6	0.7	0.7	0.7	0.5	0.6	0.6	0.6	0.5	0.6	0.6	0.6			0.7	0.8	0.8	0.8			0.6	0.7	0.7	0.7	0.6	0.7	0.7	0.7	40	
42		0.5													0.5	0.6	0.6	0.6					0.5	0.5	0.5		0.5	0.5	0.5	42

RADIO RADIUS PORTÉE AUSLADUNG m	85%																				RADIO RADIUS PORTÉE AUSLADUNG m									
	LONGITUD DE PLUMA+PLUMÍN MAIN BOOM+JIB LENGTH LONGUEUR DE FLÈCHE+FLÈCHETTE TELESKOPAUSSLEGER- UND SPITZENLÄNGEN																													
	35.7 m + 9.3 m				38.9 m + 9.3 m				42.0 m + 9.3 m				35.7 m + 16.0 m				38.9 m + 16.0 m					42.0 m + 16.0 m								
	0°	15°	30°	45°	0°	15°	30°	45°	0°	15°	30°	45°	0°	15°	30°	45°	0°	15°	30°	45°	0°	15°	30°	45°	0°	15°	30°	45°		
7	5.5																												7	
8	5.5				4.1											2.8													8	
9	5.5	4.5			4.1				3.1						2.8			2.1											9	
10	5.5	4.5	4.3		4.1	3.7			3.1	3.1					2.8			2.1						1.7					10	
12	5.2	4.5	4.3	3.2	4.1	3.7	3.4		3.1	3.1	2.9				2.6	2.2		2.1						1.7					12	
14	4.8	4.5	4.3	3.2	4.1	3.7	3.4	2.8	3.1	3.1	2.9	2.4			2.4	2.2	1.9				2.1	2.0			1.7	1.7			14	
16	4.6	4.3	4.0	3.2	4.1	3.6	3.4	2.8	3.1	3.1	2.9	2.4			2.3	2.2	1.9				2.1	2.0	1.6		1.7	1.7	1.6		16	
18	4.4	4.1	3.6	3.2	4.0	3.4	3.1	2.8	3.1	3.1	2.9	2.4			2.2	2.1	1.9	1.5			2.1	2.0	1.6	1.3	1.7	1.7	1.6	1.1	18	
20	4.2	3.9	3.4	3.1	3.7	3.2	2.9	2.6	3.1	3.0	2.6	2.3			2.1	2.0	1.8	1.5			2.0	1.9	1.5	1.3	1.7	1.7	1.5	1.1	20	
22	3.7	3.3	3.0	2.8	3.4	2.9	2.6	2.3	3.0	2.8	2.4	2.1			2.0	1.9	1.8	1.5			1.9	1.8	1.5	1.3	1.7	1.7	1.5	1.1	22	
24	3.3	3.0	2.8	2.4	3.1	2.6	2.4	2.0	2.6	2.5	2.2	1.8			1.9	1.8	1.5	1.4			1.8	1.7	1.4	1.3	1.7	1.7	1.4	1.1	24	
26	2.9	2.6	2.4	2.1	2.8	2.4	2.2	1.8	2.4	2.3	2.0	1.7			1.8	1.7	1.5	1.4			1.7	1.5	1.4	1.3	1.5	1.5	1.4	1.1	26	
28	2.4	2.3	2.1	1.8	2.3	2.2	2.0	1.7	2.2	2.1	1.9	1.5			1.7	1.5	1.4	1.3			1.5	1.4	1.3	1.2	1.4	1.4	1.3	1.1	28	
30	2.1	2.1	2.0	1.7	2.0	2.0	1.9	1.5	1.9	1.9	1.8	1.4			1.5	1.4	1.4	1.3			1.4	1.3	1.3	1.2	1.3	1.3	1.3	1.1	30	
32	1.8	1.9	1.9	1.5	1.7	1.8	1.8	1.4	1.5	1.7	1.7	1.3			1.4	1.4	1.3	1.3			1.3	1.3	1.2	1.2	1.2	1.2	1.2	1.1	32	
34	1.4	1.5	1.5	1.4	1.3	1.4	1.4	1.3	1.3	1.4	1.4	1.2			1.3	1.3	1.2	1.2			1.2	1.2	1.1	1.1	1.2	1.2	1.1	1.1	34	
36	1.1	1.2	1.2	1.2	1.0	1.1	1.1	1.1	1.0	1.1	1.1	1.1			1.2	1.2	1.2	1.2			1.1	1.1	1.1	1.1	1.1	1.1	1.1	1.1	36	
38	0.9	1.0	1.0	1.0	0.8	0.9	0.9	0.9	0.8	0.9	0.9	0.9			1.0	1.1	1.1	1.1			0.9	1.0	1.0	1.0	0.9	1.0	1.0	1.0	38	
40	0.7	0.8	0.8	0.8	0.6	0.7	0.7	0.7	0.6	0.7	0.7	0.7			0.8	0.9	0.9	0.9			0.7	0.8	0.8	0.8	0.7	0.8	0.8	0.8	40	
42		0.6													0.6	0.7	0.7	0.7					0.6	0.6	0.6		0.6	0.6	0.6	42

I-II-III-IV	80	80	80	80	90	90	90	90	100	100	100	100	80	80	80	80	90	90	90	90	100	100	100	100	I-II-III-IV
-------------	----	----	----	----	----	----	----	----	-----	-----	-----	-----	----	----	----	----	----	----	----	----	-----	-----	-----	-----	-------------

# TABLA DE CARGAS

AT604200400

## LIFTING CAPACITIES / FORCES DE LEVAGE / TRAGLASTEN

04012-04020

### CONTRAPESO / COUNTERWEIGHT / CONTREPOIDS / BALLAST

3.4 t

PLUMA PRINCIPAL+PLUMÍN DE CELOSÍA. GRÚA SOBRE ESTABILIZADORES TOTALMENTE EXTENDIDOS. ZONA DE TRABAJO 360°  
 MAIN BOOM+LATTICE JIB. CRANE ON FULLY EXTENDED OUTRIGGERS. ROTATION 360°  
 FLÈCHE PRINCIPALE+FLÈCHETTE TREILLIS. GRUE SUR STABILISATEURS EN EXTENSION TOTALE. ROTATION 360°  
 TELESKOPAUSSLEGER+GITTERSPITZE. ARBEITSZUSTAND: ABGESTÜTZT (VOLLE STÜTZBASIS). ARBEITSBEREICH: 360°

RADIO RADIUS PORTÉE AUSLADUNG m	75%																				RADIO RADIUS PORTÉE AUSLADUNG m				
	LONGITUD DE PLUMA+PLUMÍN MAIN BOOM+JIB LENGTH LONGUEUR DE FLÈCHE+FLÈCHETTE TELESKOPAUSSLEGER- UND SPITZENLÄNGEN																								
	35.7 m + 9.3 m				38.9 m + 9.3 m				42.0 m + 9.3 m				35.7 m + 16.0 m				38.9 m + 16.0 m					42.0 m + 16.0 m			
	0°	15°	30°	45°	0°	15°	30°	45°	0°	15°	30°	45°	0°	15°	30°	45°	0°	15°	30°	45°	0°	15°	30°	45°	
7	5.5																								7
8	5.3				4.1								2.8												8
9	5.1	4.5			4.1				3.1				2.7				2.1								9
10	5.0	4.5	4.3		4.1	3.7			3.1	3.1			2.6				2.1				1.7				10
12	4.7	4.3	4.1	3.2	4.0	3.6	3.4		3.1	3.1	2.9		2.4	2.2			2.1				1.7				12
14	4.4	4.1	3.9	3.1	3.9	3.5	3.3	2.8	3.1	3.1	2.8	2.4	2.2	2.1	1.9		2.1	2.0			1.7	1.7			14
16	4.0	3.7	3.5	3.0	3.7	3.3	3.1	2.7	3.0	3.0	2.7	2.3	2.1	2.0	1.8		2.0	1.9	1.6		1.7	1.7	1.6		16
18	3.5	3.3	3.1	2.8	3.4	3.0	2.7	2.6	2.8	2.8	2.5	2.2	2.0	1.9	1.7	1.5	1.9	1.8	1.5	1.3	1.7	1.7	1.5	1.1	18
20	2.9	2.8	2.6	2.5	2.8	2.7	2.4	2.3	2.5	2.5	2.2	2.0	1.8	1.7	1.6	1.4	1.7	1.6	1.4	1.2	1.7	1.6	1.4	1.1	20
22	2.3	2.3	2.2	2.2	2.2	2.1	2.0	1.9	2.1	2.1	1.9	1.8	1.7	1.6	1.5	1.3	1.6	1.5	1.3	1.1	1.6	1.5	1.3	1.1	22
24	1.8	1.8	1.8	1.8	1.7	1.6	1.6	1.6	1.7	1.6	1.6	1.5	1.5	1.4	1.3	1.2	1.4	1.3	1.2	1.1	1.4	1.3	1.2	1.1	24
26	1.4	1.5	1.5	1.5	1.3	1.3	1.3	1.3	1.3	1.3	1.3	1.3	1.3	1.2	1.1	1.1	1.2	1.2	1.1	1.0	1.2	1.2	1.1	1.0	26
28	1.1	1.2	1.2	1.2	1.0	1.0	1.0	1.0	1.0	1.0	1.0	1.0	1.1	1.1	1.0	1.0	1.1	1.1	1.0	1.0	1.1	1.1	1.0	1.0	28
30	0.8	0.9	0.9	0.9	0.7	0.8	0.8	0.8	0.7	0.8	0.8	0.8	0.9	0.9	0.9	0.9	0.9	0.9	0.9	0.9	0.9	0.9	0.9	0.9	30
32	0.6	0.7	0.7	0.7	0.5	0.6	0.6	0.6	0.5	0.6	0.6	0.6	0.7	0.8	0.8	0.8	0.6	0.7	0.7	0.7	0.6	0.7	0.7	0.7	32
34		0.5	0.5	0.5									0.5	0.6	0.6	0.6		0.5	0.5	0.5		0.5	0.5	0.5	34

RADIO RADIUS PORTÉE AUSLADUNG m	85%																				RADIO RADIUS PORTÉE AUSLADUNG m				
	LONGITUD DE PLUMA+PLUMÍN MAIN BOOM+JIB LENGTH LONGUEUR DE FLÈCHE+FLÈCHETTE TELESKOPAUSSLEGER- UND SPITZENLÄNGEN																								
	35.7 m + 9.3 m				38.9 m + 9.3 m				42.0 m + 9.3 m				35.7 m + 16.0 m				38.9 m + 16.0 m					42.0 m + 16.0 m			
	0°	15°	30°	45°	0°	15°	30°	45°	0°	15°	30°	45°	0°	15°	30°	45°	0°	15°	30°	45°	0°	15°	30°	45°	
7	5.5																								7
8	5.5				4.1								2.8												8
9	5.5	4.5			4.1				3.1				2.8				2.1								9
10	5.5	4.5	4.3		4.1	3.7			3.1	3.1			2.8				2.1				1.7				10
12	5.2	4.5	4.3	3.2	4.1	3.7	3.4		3.1	3.1	2.9		2.6	2.2			2.1				1.7				12
14	4.8	4.5	4.3	3.2	4.1	3.7	3.4	2.8	3.1	3.1	2.9	2.4	2.4	2.2	1.9		2.1	2.0			1.7	1.7			14
16	4.4	4.1	3.9	3.2	4.1	3.6	3.4	2.8	3.1	3.1	2.9	2.4	2.3	2.2	1.9		2.1	2.0	1.6		1.7	1.7	1.6		16
18	3.9	3.6	3.4	3.1	3.7	3.3	3.0	2.8	3.1	3.1	2.8	2.4	2.2	2.1	1.9	1.5	2.1	2.0	1.6	1.3	1.7	1.7	1.6	1.1	18
20	3.2	3.1	2.9	2.8	3.1	3.0	2.6	2.5	2.8	2.8	2.4	2.2	2.0	1.9	1.8	1.5	1.9	1.8	1.5	1.3	1.7	1.7	1.5	1.1	20
22	2.5	2.5	2.4	2.4	2.4	2.3	2.2	2.1	2.3	2.3	2.1	2.0	1.9	1.8	1.7	1.4	1.8	1.7	1.4	1.2	1.7	1.7	1.4	1.1	22
24	2.0	2.0	2.0	2.0	1.9	1.8	1.8	1.8	1.9	1.8	1.8	1.7	1.7	1.5	1.4	1.3	1.5	1.4	1.3	1.2	1.5	1.4	1.3	1.1	24
26	1.5	1.7	1.7	1.7	1.4	1.4	1.4	1.4	1.4	1.4	1.4	1.4	1.4	1.3	1.2	1.2	1.3	1.3	1.2	1.1	1.3	1.3	1.2	1.1	26
28	1.2	1.3	1.3	1.3	1.1	1.1	1.1	1.1	1.1	1.1	1.1	1.1	1.2	1.2	1.1	1.1	1.2	1.2	1.1	1.1	1.2	1.2	1.1	1.1	28
30	0.9	1.0	1.0	1.0	0.8	0.9	0.9	0.9	0.8	0.9	0.9	0.9	1.0	1.0	1.0	1.0	1.0	1.0	1.0	1.0	1.0	1.0	1.0	1.0	30
32	0.7	0.8	0.8	0.8	0.6	0.7	0.7	0.7	0.6	0.7	0.7	0.7	0.8	0.9	0.9	0.9	0.7	0.8	0.8	0.8	0.7	0.8	0.8	0.8	32
34		0.6	0.6	0.6									0.6	0.7	0.7	0.7		0.6	0.6	0.6		0.6	0.6	0.6	34

I-II-III-IV	80	80	80	80	90	90	90	90	100	100	100	100	80	80	80	80	90	90	90	90	100	100	100	100	I-II-III-IV
-------------	----	----	----	----	----	----	----	----	-----	-----	-----	-----	----	----	----	----	----	----	----	----	-----	-----	-----	-----	-------------

# TABLA DE CARGAS

AT604200400

## LIFTING CAPACITIES / FORCES DE LEVAGE / TRAGLASTEN

01110

### CONTRAPESO / COUNTERWEIGHT / CONTREPOIDS / BALLAST

9.4 t / 3.4 t

PLUMA PRINCIPAL. GRÚA SOBRE NEUMÁTICOS. POR DETRÁS  
MAIN BOOM. CRANE ON WHEELS. OVER REAR  
FLÈCHE PRINCIPALE. GRUE SUR PNEUS. SUR L'ARRIÈRE  
TELESKOPUSLEGER. ARBEITSZUSTAND: FREISTEHEND. NACH HINTEN

RADIO RADIUS PORTÉE AUSLADUNG m	75%		I II-III-IV	
	CONTRAPESO COUNTERWEIGHT CONTREPOIDS BALLAST			
	3.4 t	9.4 t		
3	12.3	12.6	0	0
4	9.9	10.2	0	0
5	8.0	8.3	0	0
6	6.6	6.8	0	0
7	5.5	5.7	0	0
8	5.2	5.4	0	30
9	4.5	4.6	0	30
10	3.9	4.0	0	30
11	3.3	3.4	0	30
12	2.9	3.0	0	30
13	2.5	2.6	0	30
14	2.1	2.2	0	30

## NOTAS REFERIDAS A LAS TABLAS DE CARGAS

\* Por detrás +/-10° mediante polea adicional.

- Las capacidades de carga indicadas al 75% están referidas a las normas DIN 15019(2) y DIN 15018(2,3). Cargas en t. Máxima velocidad de viento 9 m/s.
- Las cargas al 85% no superan el 85% de la carga de vuelco. Vientos y efectos dinámicos reducen las cargas indicadas.
- Para obtener la carga de elevación útil hay que restar de las capacidades indicadas en las tablas el peso del gancho, cables, eslingas y accesorios.
- En el caso de la tabla de cargas sobre neumáticos, máxima velocidad de desplazamiento con carga suspendida: 1 Km/h.

## REMARKS ON THE LIFTING CAPACITIES CHARTS

\* Over rear +/-10° by means of an additional pulley.

- The tabulated load ratings at 75% relate to DIN 15019(2) and DIN 15018(2,3) standards. Loads in t. Maximal wind speed 9 m/s.
- The lifting capacities at 85% do not exceed 85% of tipping load. Wind and dynamic influences decrease the lifting capacities.
- In order to obtain the net lifting capacity the weight of hook block, ropes, slings and accessories must be reduced from the tabulated lifting capacity.
- In the case of the chart of lifting capacities on wheels, maximal travel speed with suspended load: 1 Km/h.

## NOTES POUR LES TABLEAUX DES FORCES DE LEVAGE

\* Sur l'arrière dans l'axe +/-10° moyennant une poulie additionnelle.

- Les capacités de charge au 75% sont référées aux normes DIN 15019(2) et DIN 15018(2,3). Charges en t. Vitesse maximale du vent 9 m/s.
- Les charges au 85% ne dépassent pas le 85% du basculement. Le vent et les effets dynamiques réduisent les charges indiquées.
- Pour obtenir la capacité de levage utile on doit soustraire le poids du moufle, des câbles, des élingues et des accessoires de la capacité de levage des tableaux.
- Dans le cas du tableau de forces de levage sur pneus, la vitesse de déplacement maximale pour la translation avec charge: 1 Km/h.

## ANMERKUNGEN ZU DEN TRAGLASTTABELLEN

\* Nach hinten +/-10° durch eine zusätzliche Seilrolle.

- Die angegebenen Traglasten bei 75% entsprechen DIN 15019(2) und DIN 15018(2,3). Lasten in t. Maximale Windgeschwindigkeit 9 m/s.
- Die Traglasten bei 85% überschreiten nicht 85% der Kipplast. Wind und dynamische Einflüsse reduzieren die angegebenen Traglasten.
- Zur Erreichung der Nutzlast ist das Gewicht der Haken, Kabel, Schlingen und des Zubehörs von den in den Tabellen angegebenen Traglasten abzurechnen.
- Für den Fall „Traglasten freistehend“ ist die maximale Fahrgeschwindigkeit für das Fahren mit hängender Last 1 Km/h.